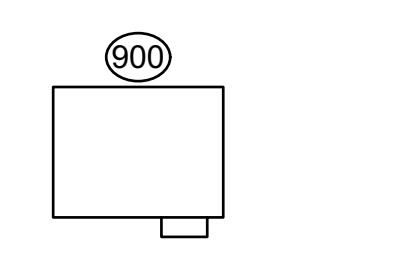


Note:
The hazer should be placed in the far USL corner of the catwalks on the ground to hang. The exact positioning of the instrument will be determined by the designer at focus.



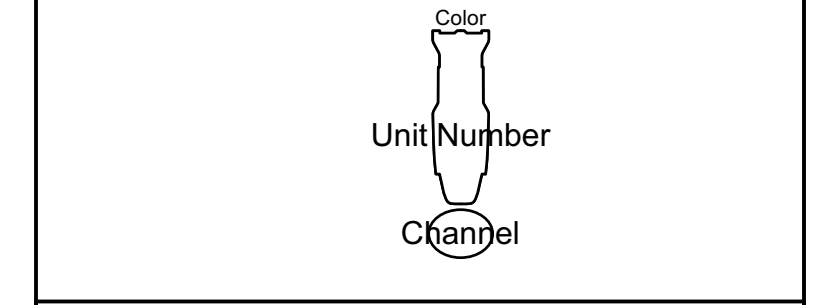
Symbol Key

- ETC Source4 14deg @ 575 w
- ETC Source4 19deg @ 575w
- ETC Source4 26deg @ 575w
- ETC Source4 36deg @ 575w
- ETC Source4 50deg @ 575w
- ETC Source4 PAR MFL @ 575w
- ETC Source4 PAR WFL @ 575w
- ARRI Studio 5000 Fresnel @ 5kw
- Colortran 10in Fresnel @ 2kw
- Colortran 8in Fresnel @ 2kw
- ETC Selador Paletta 42 @ 432w
- Hazebase Base Hazer Pro @ 1.5kw
- Footlight
- LED Birdie

Accessories

- Apollo Smart Color Pro 7.25
- I-Cue
- Apollo EZ Iris
- S4A Template Holder
- Iris
- 6.25in Top Hat
- 7.5in Barn Door
- 8in BarnDoor
- 12in Barn Door

Typical



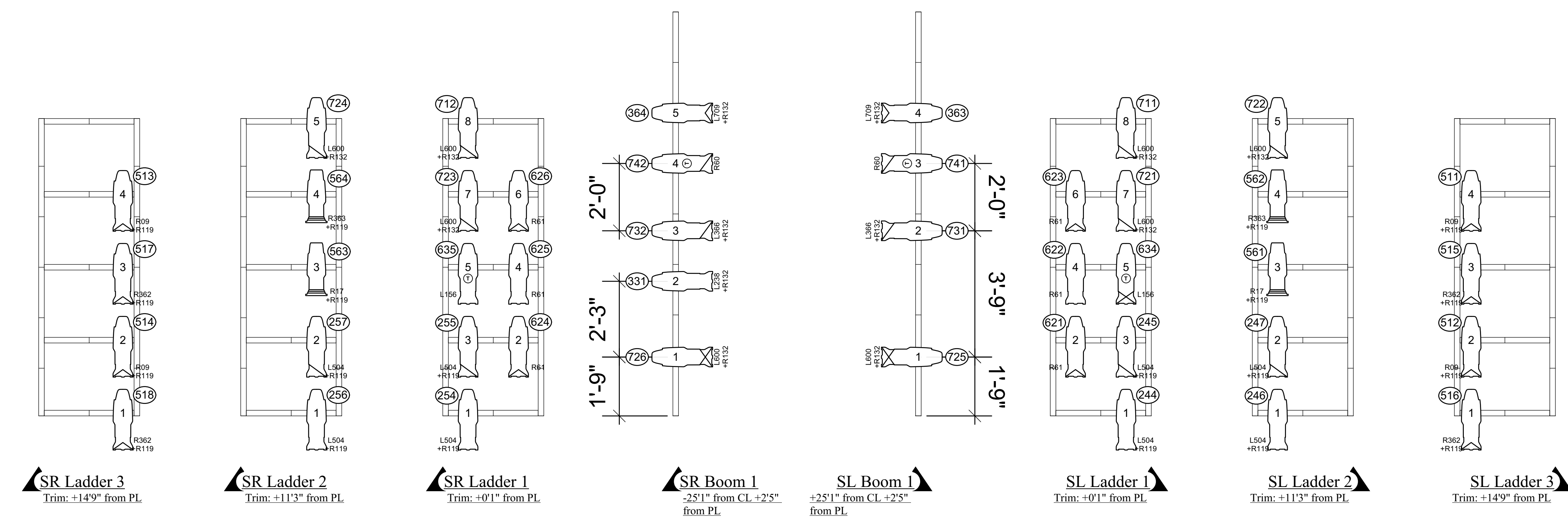
- Notes:
1. All accessories, color, and texture should be dropped prior to focus.
 2. Dimensions are 1/4" unless otherwise specified.
 4. Final placement of booms and hazer to be determined at focus.
 7. Dimensions are taken from CL unless otherwise noted.



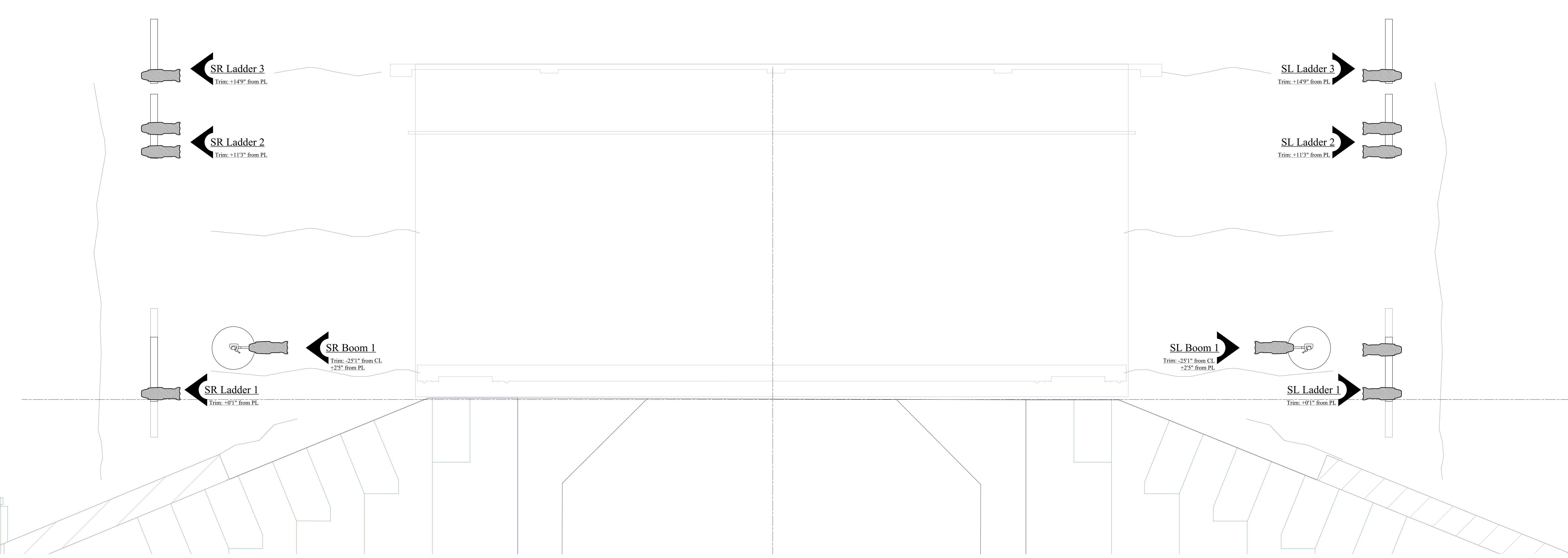
Indecent
The Theatre School
The Watts Theater

Aria Morris
Lighting Designer
(702) 205-0877 - ariamorris3@gmail.com

Director - Rebecca Willingham
Scenic Designer - Abby West
Lighting Designer - Aria Morris
Costume Designer - Avery Lauer
Sound Designer - Forrest Gregor
Projection Designer - Grant Palmer
Stage Manager - Joshua Clewis
Technical Director - Ollie Gillespie
ALD - Zachary C. Fonder
PE - Nathan Lesperance



Notes
 1. Booms are trimmed to the center of the pipe.
 2. Ladders are trimmed to the DS edge of the position.



Symbol Key

- ETC Source4 14deg @ 575 w
- ETC Source4 19deg @ 575w
- ETC Source4 26deg @ 575w
- ETC Source4 36deg @ 575w
- ETC Source4 50deg @ 575w
- ETC Source4 PAR MFL @ 575w
- ETC Source4 PAR WFL @ 575w
- ARRI Studio 5000 Fresnel @ 5kw
- Colortran 10in Fresnel @ 2kw
- Colortran 8in Fresnel @ 2kw
- ETC Selador Paletta 42 @ 432w
- Hazebase Base Hazer Pro @ 1.5kw
- Footlight
- LED Birdie

Accessories

- Apollo Smart Color Pro 7.25
- I-Cue
- Apollo EZ Iris
- S4A Template Holder
- Iris
- 6.25in Top Hat
- 7.5in Barn Door
- 8in BarnDoor
- 12in Barn Door

Typical

Unit Number
Color
Channel

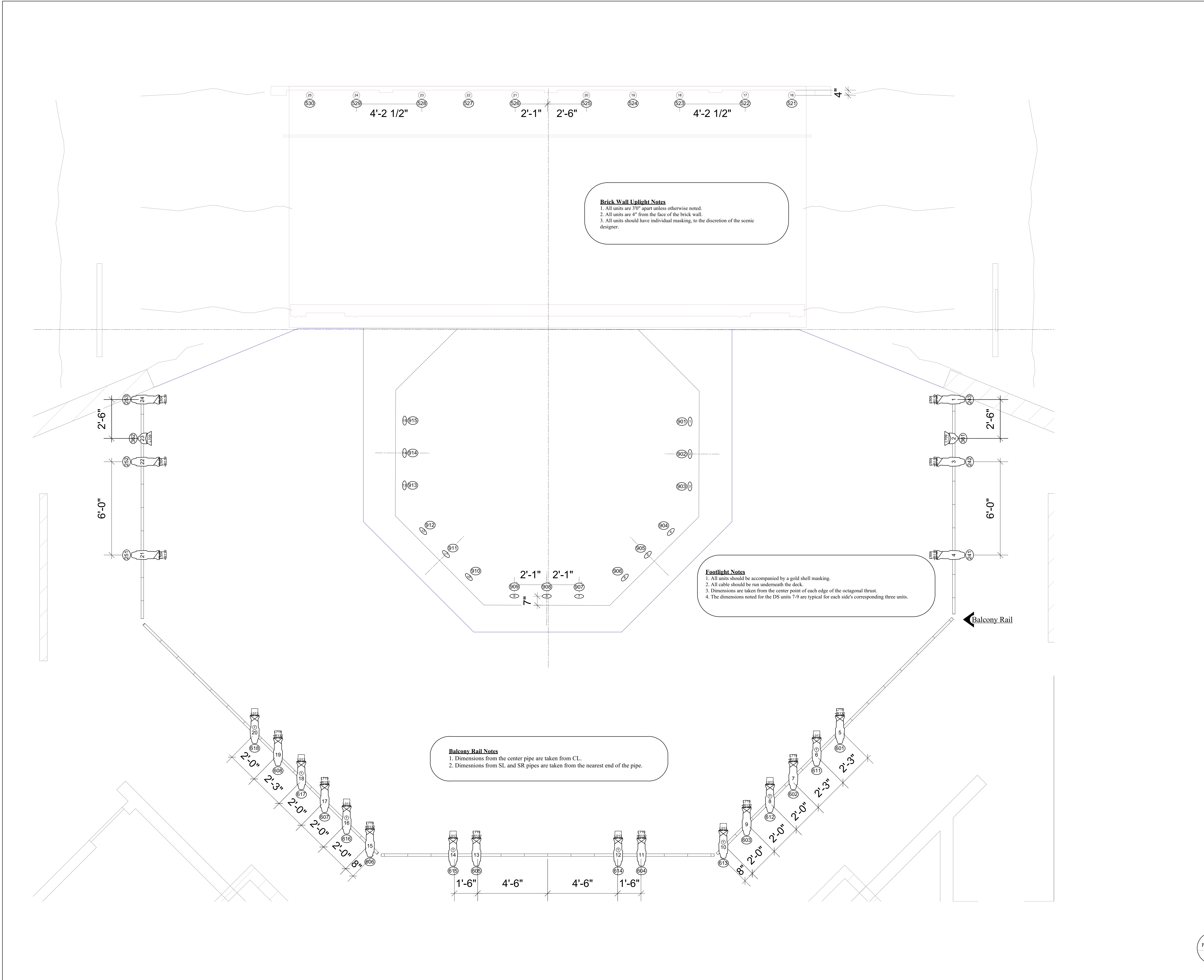
Notes:
 1. All accessories, color, and texture should be dropped prior to focus.
 2. Dimensions are 1'6" unless otherwise specified.
 4. Final placement of booms and hazer to be determined at focus.
 7. Dimensions are taken from CL unless otherwise noted.



Indecent
 The Theatre School
 The Watts Theater

Aria Morris
 Lighting Designer
 (702) 205-0877 - ariamorris3@gmail.com

Director - Rebecca Willingham
 Scenic Designer - Abby West
 Lighting Designer - Aria Morris
 Costume Designer - Avery Lauer
 Sound Designer - Forrest Gregor
 Projection Designer - Grant Palmer
 Stage Manager - Joshua Clewis
 Technical Director - Ollie Gillespie
 ALD - Zachary C. Fonder
 PE - Nathan Lesperance

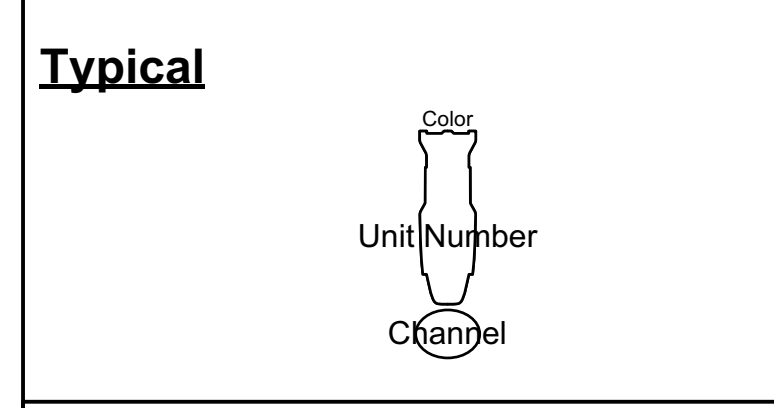


Brick Wall Uplight Notes
 1. All units are 30" apart unless otherwise noted.
 2. All units are 4" from the face of the brick wall.
 3. All units should have individual masking, to the discretion of the scenic designer.

Footlight Notes
 1. All units should be accompanied by a gold shell masking.
 2. All cable should be run underneath the deck.
 3. Dimensions are taken from the center point of each edge of the octagonal thrust.
 4. The dimensions noted for the DS units 7-9 are typical for each side's corresponding three units.

Balcony Rail Notes
 1. Dimensions from the center pipe are taken from CL.
 2. Dimensions from SL and SR pipes are taken from the nearest end of the pipe.

- Symbol Key**
- ETC Source4 14deg @ 575 w
 - ETC Source4 19deg @ 575w
 - ETC Source4 26deg @ 575w
 - ETC Source4 36deg @ 575w
 - ETC Source4 50deg @ 575w
 - ETC Source4 PAR MFL @ 575w
 - ETC Source4 PAR WFL @ 575w
 - ARRI Studio 5000 Fresnel @ 5kw
 - Colortran 10in Fresnel @ 2kw
 - Colortran 8in Fresnel @ 2kw
 - ETC Selador Palette 42 @ 432w
 - Hazebase Base Hazer Pro @ 1.5kw
 - Footlight
 - LED Birdie
- Accessories**
- Apollo Smart Color Pro 7.25
 - I-Cue
 - Apollo EZ Iris
 - S4A Template Holder
 - Iris
 - 6.25in Top Hat
 - 7.5in Barn Door
 - 8in Barn Door
 - 12in Barn Door



- Notes:**
1. All accessories, color, and texture should be dropped prior to focus.
 2. Dimensions are 1/2" unless otherwise specified.
 4. Final placement of booms and hazer to be determined at focus.
 7. Dimensions are taken from CL unless otherwise noted.



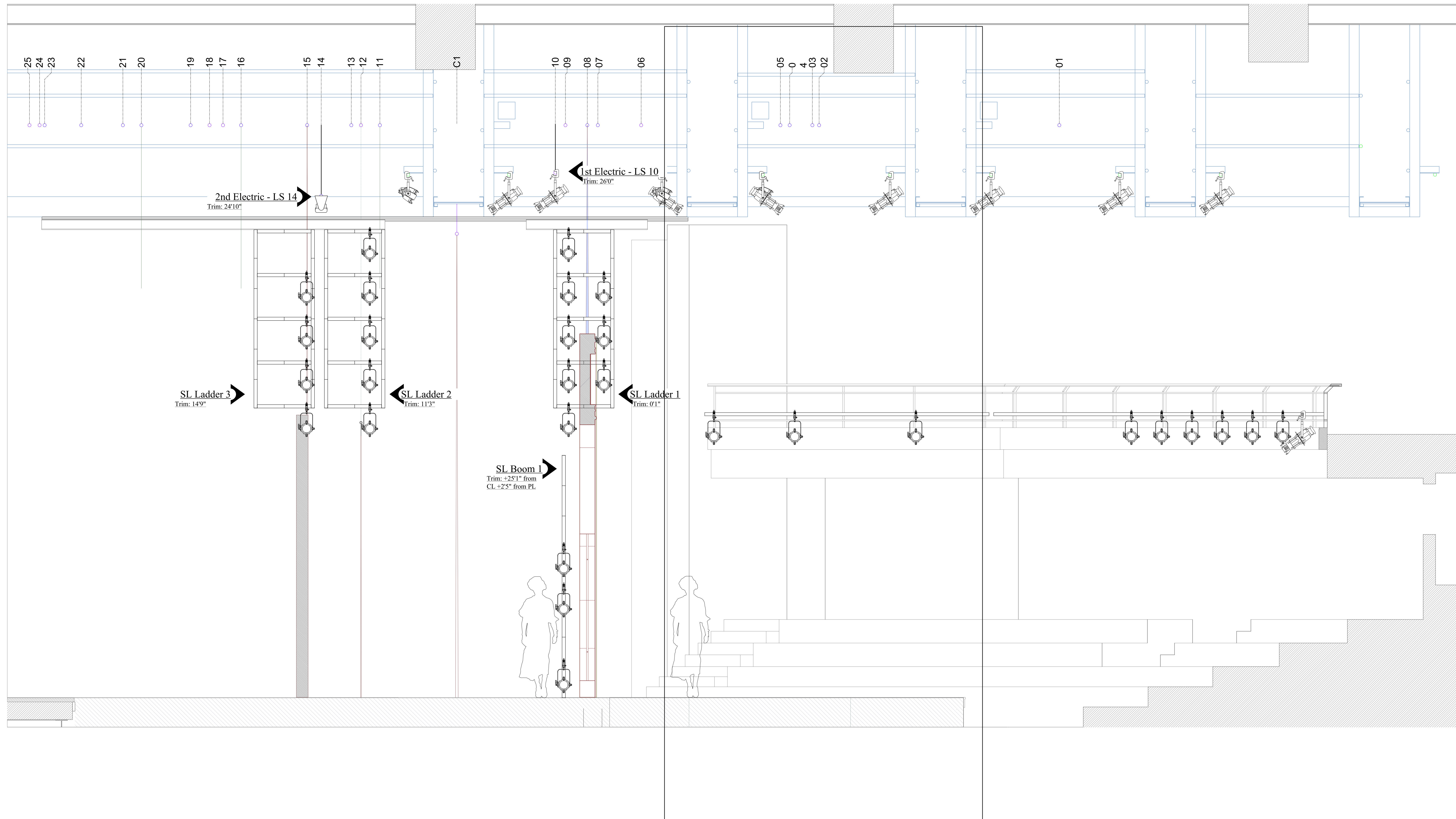
Indecent
 The Theatre School
 The Watts Theater

Aria Morris
 Lighting Designer
 (702) 205-0877 - ariamorris3@gmail.com

Director - Rebecca Willingham
 Scenic Designer - Abby West
 Lighting Designer - Aria Morris
 Costume Designer - Avery Lauer
 Sound Designer - Forrest Gregor
 Projection Designer - Grant Palmer
 Stage Manager - Joshua Clewis
 Technical Director - Ollie Gillespie
 ALD - Zachary C. Fonder
 PE - Nathan Lesperance

Plate: 3
 Of: 4

FOH & Deck Plan
 1/2" = 10"
 Date - 04/27/23 Version - 2



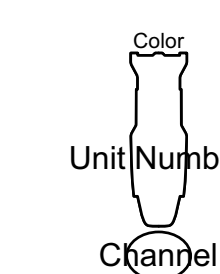
Symbol Key

- ETC Source4 14deg @ 575 w
- ETC Source4 19deg @ 575w
- ETC Source4 26deg @ 575w
- ETC Source4 36deg @ 575w
- ETC Source4 50deg @ 575w
- ETC Source4 PAR MFL @ 575w
- ETC Source4 PAR WFL @ 575w
- ARRI Studio 5000 Fresnel @ 5kw
- Colortran 10in Fresnel @ 2kw
- Colortran 8in Fresnel @ 2kw
- ETC Selador Paletta 42 @ 432w
- Hazebase Base Hazer Pro @ 1.5kw
- Footlight
- LED Birdie

Accessories

- Apollo Smart Color Pro 7.25
- I-Cue
- Apollo EZ Iris
- S4A Template Holder
- Iris
- 6.25in Top Hat
- 7.5in Barn Door
- 8in Barn Door
- 12in Barn Door

Typical



- Notes:
1. All accessories, color, and texture should be dropped prior to focus.
 2. Dimensions are 1'6" unless otherwise specified.
 4. Final placement of booms and hazer to be determined at focus.
 7. Dimensions are taken from CL unless otherwise noted.



Indecent
The Theatre School
The Watts Theater

AM Aria Morris
Lighting Designer
(702) 205-0877 - ariamorris3@gmail.com

Director - Rebecca Willingham
Scenic Designer - Abby West
Lighting Designer - Aria Morris
Costume Designer - Avery Lauer
Sound Designer - Forrest Gregor
Projection Designer - Grant Palmer
Stage Manager - Joshua Clewis
Technical Director - Ollie Gillespie
ALD - Zachary C. Fonder
PE - Nathan Lesperance

Plate 4
of 4

Section View
1/2" = 1'0"

Date - 04/27/23 Version - 2